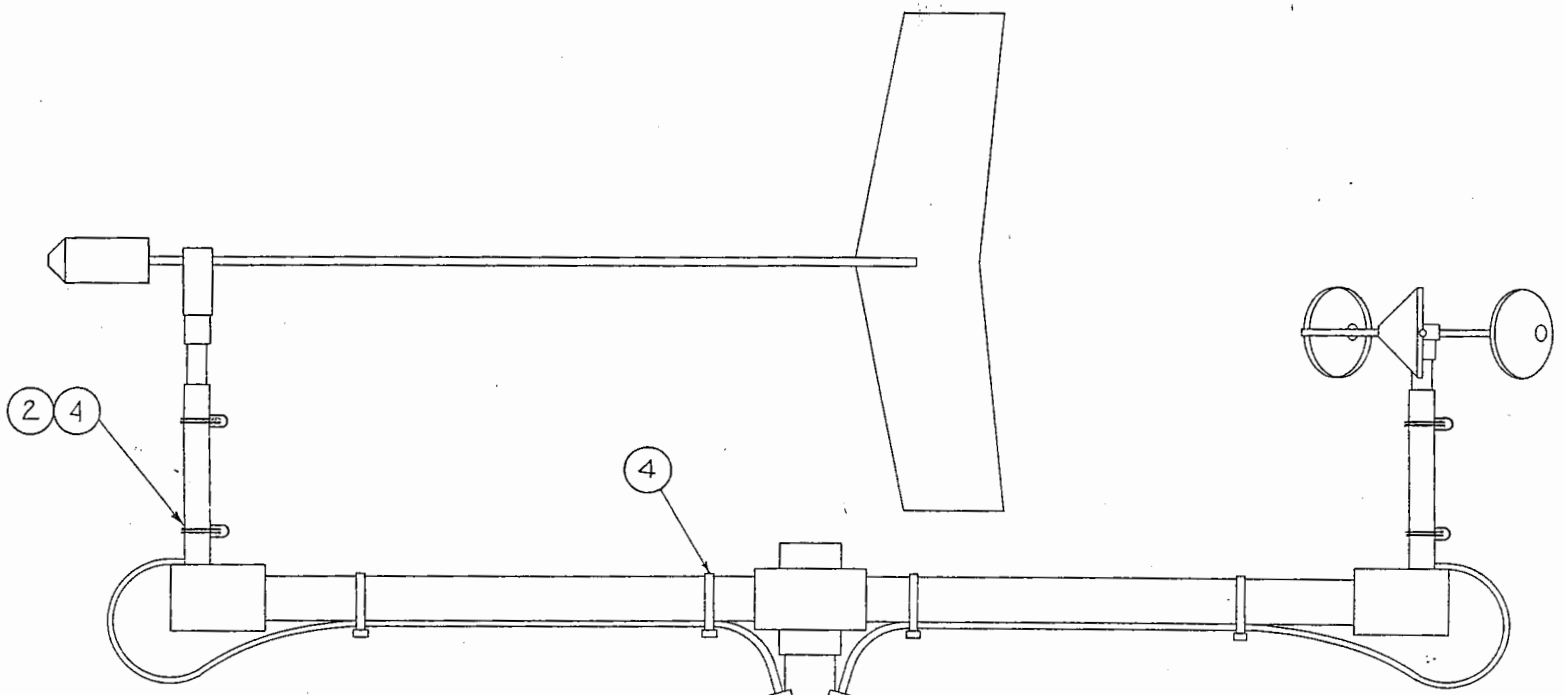


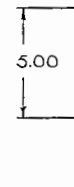
REVISIONS				
ZONE	REV.	DESCRIPTION	DATE	APPROVED
A	ECN 2618	PK	4/26/85	
B	SEE ECN 3001		6-15-87	S.F
C	SEE ECN 3242		5-5-88	S.F



**INSTALLATION NOTES:**

1. BE SURE TOP OF HEATER OR TY-RAPS DO NOT INTERFERE WITH THE ROTATION OF THE CUP OR VANE.
2. BE SURE ALL TY-RAPS ARE SECURELY TIGHTENED.
3. CONNECT AC CABLE TO DUAL HEATER CONTROL ASSY BEFORE MAKING CONNECTION TO AC POWER. OBSERVE CAUTION: POWER TO HEATERS IS 120 VAC NOMINAL.
4. THE THERMOSTAT IS ENCLOSED IN THE DUAL HEATER CONTROL ASSY. THERMOSTAT CLOSES AT 40°F AND OPENS AT 55°F.
5. WHEN THE HEATERS ARE ON, THE POWER DISSIPATED IS 20 WATTS. OBSERVE CAUTION WHEN HANDLING HOT HEATERS.

101255  
(REF. ONLY)



QTY REQD	FSCM NO.	PART OR IDENTIFYING NO.	NOMENCLATURE OR DESCRIPTION	MATERIAL SPECIFICATION
PARTS LIST				
UNLESS OTHERWISE SPECIFIED DIMENSIONS ARE IN INCHES TOLERANCES ARE: FRACTIONS DECIMALS ANGLES XXX ± .020			<b>CLIMATONIC</b>	
MATERIAL			CONTRACT NO.	DATE
FINISH			APPROVALS	DATE
NEXT ASSY			ISSUED	DATE
APPLICATION			SCALE	SHEET 1 OF 2

DRAWN	BJ	4/27/82	WMIII EXTERNAL HEATER	
CHECKED	DA	5/18/82	SIZE	FSCM NO.
ISSUED	DA	5/19/82	C 5233	DWG. NO. 101234
				REV. C

DWG. NO. 101234

SH 1 REV C

A

WM-III EXTERNAL HEATER 10 WATT  
P/N 101234 Rev C  
PARTS LIST  
Sheet 2 of 2

ITEM	SYM. NO	QTY	PART NO.	DESCRIPTION
1		0.0	101234G	SEE G LIST
2		2.0	101230	WMIII HEATER ASSEMBLY
4		10.0	PLT350	TIE WRAP, BLACK

SEE G LIST  
P/N 101234G Rev A  
PARTS LIST  
Sheet 1 of 1

ITEM	SYM. NO	QTY	PART NO.	DESCRIPTION
G0		1.0	101232-G0	120VAC DUAL HEATER CONTROL
G1		1.0	101232-G1	220VAC DUAL HEATER CONTROL

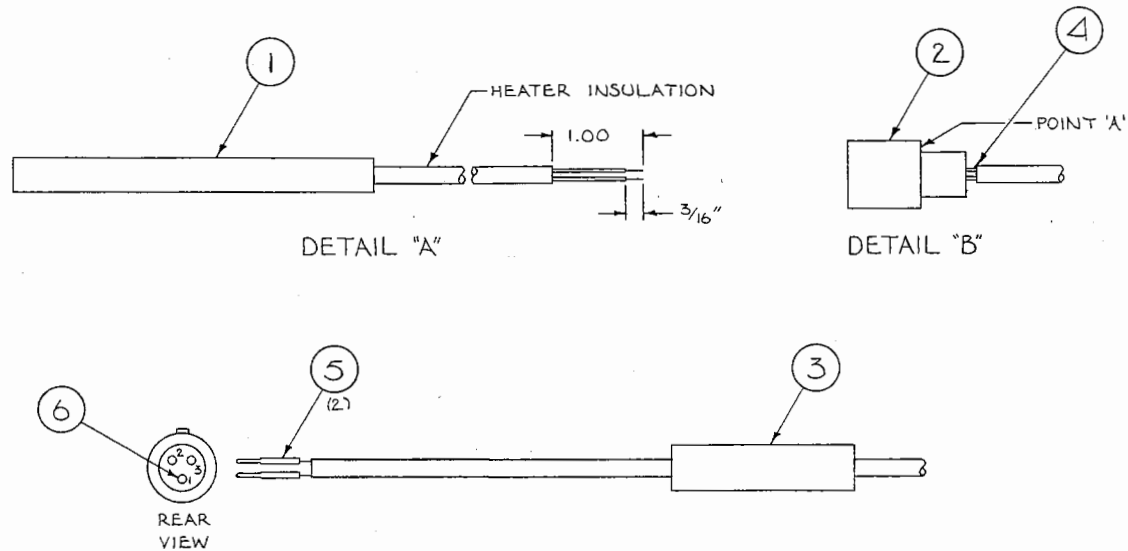
WM-III EXTERNAL HEATER 10 WATT  
P/N 101234-G0 Rev  
PARTS LIST  
Sheet 1

ITEM	SYM.NO	QTY	PART NO.	DESCRIPTION
		1.0	101232-G0	120VAC DUAL HEATER CONTROL
		1.0	101234	WM-III EXTERNAL HEATER 10 WATT

WM-III EXTERNAL HEATER 10 WATT  
P/N 101234-G1 Rev  
PARTS LIST  
Sheet 1

ITEM	SYM.NO	QTY	PART NO.	DESCRIPTION
		1.0	101232-G1	220VAC DUAL HEATER CONTROL
		1.0	101234	WM-III EXTERNAL HEATER 10 WATT

REVISIONS				
ZONE	REV.	DESCRIPTION	DATE	APPROVED
A	ECN 1959	BA	1/17/83	



NOTES:

1. CONSTRUCTION:

- A. PREPARE HEATER AS SHOWN IN DETAIL "A".
- B. CRIMP MALE PINS ON TO END OF WIRES. SLIDE SHRINK TUBING, ITEM 3, OVER HEATER INSULATION. INSERT PINS INTO CONNECTOR HOLES 2 & 3. UNIT SHOULD LOOK LIKE DETAIL "B".
- C. CRIMP FEMALE PIN WITHOUT WIRE AND INSERT INTO CONNECTOR HOLE 1.
- D. SEAL CONNECTOR WITH RTV-108. ALLOW FULL CURE APPROXIMATELY 4 HOURS BEFORE SHRINKING THE ATUM TUBING.
- E. SLIDE SHRINK TUBING UP TO POINT 'A' AND SHRINK WITH HEAT GUN.

2. INSPECTION:

- A. CONTINUITY CHECK BETWEEN PINS 2 & 3 SHOULD READ APPROXIMATELY 300 TO 400 OHMS.

QTY	FSCM NO.	PART OR IDENTIFYING NO.	NOMENCLATURE OR DESCRIPTION	MATERIAL SPECIFICATION
6	1	031-1267-000	FEMALE CRIMP PIN	CANNON
5	2	030-2196-000	MALE CRIMP PIN	CANNON
4	A/R	RTV108	SILICONE SEALANT	GE
3	1	RT1900	SHRINK TUBING 1/2 X 1 1/2 LG	ATUM
2	1	SS-3R	CONNECTOR	CANNON
1	1	500676-3	HEATER TUBULAR WM III	WATLOW

UNLESS OTHERWISE SPECIFIED DIMENSIONS ARE IN INCHES TOLERANCES ARE: FRACTIONS DECIMALS ± 1/64" ± .001"		CONTRACT NO.				
APPROVALS		DATE				
101234		DRAWN	2/10/82	WM III HEATER ASSY		
101237		CHECKED	7/24/82			
		ISSUED	2-2-82			
NEXT ASSY	USED ON	SCALE	SIZE	FSCM NO.	DWG. NO. 101230	REV. A
APPLICATION	DO NOT SCALE DRAWING	SCALE	SHEET			

DWG. NO. 101230

REV. A

A

WMIII HEATER ASSEMBLY  
P/N 101230 Rev A  
PARTS LIST  
Sheet 1

ITEM	SYM. NO	QTY	PART NO.	DESCRIPTION
------	---------	-----	----------	-------------

Notes: \* TO BE USED AS REQUIRED

1		1.0	500676-3	HEATER, TUBULAR WM-III
2		1.0	SS3R	CONNECTOR
3		1.0	ATUM-1/2	TUBING, SHRINK 1/2X1-1/2
4*		0.0	RTV108	SILICONE SEALING
5		2.0	030-2196-000	PIN
6		1.0	031-1267-000	PIN, CONNECTOR