

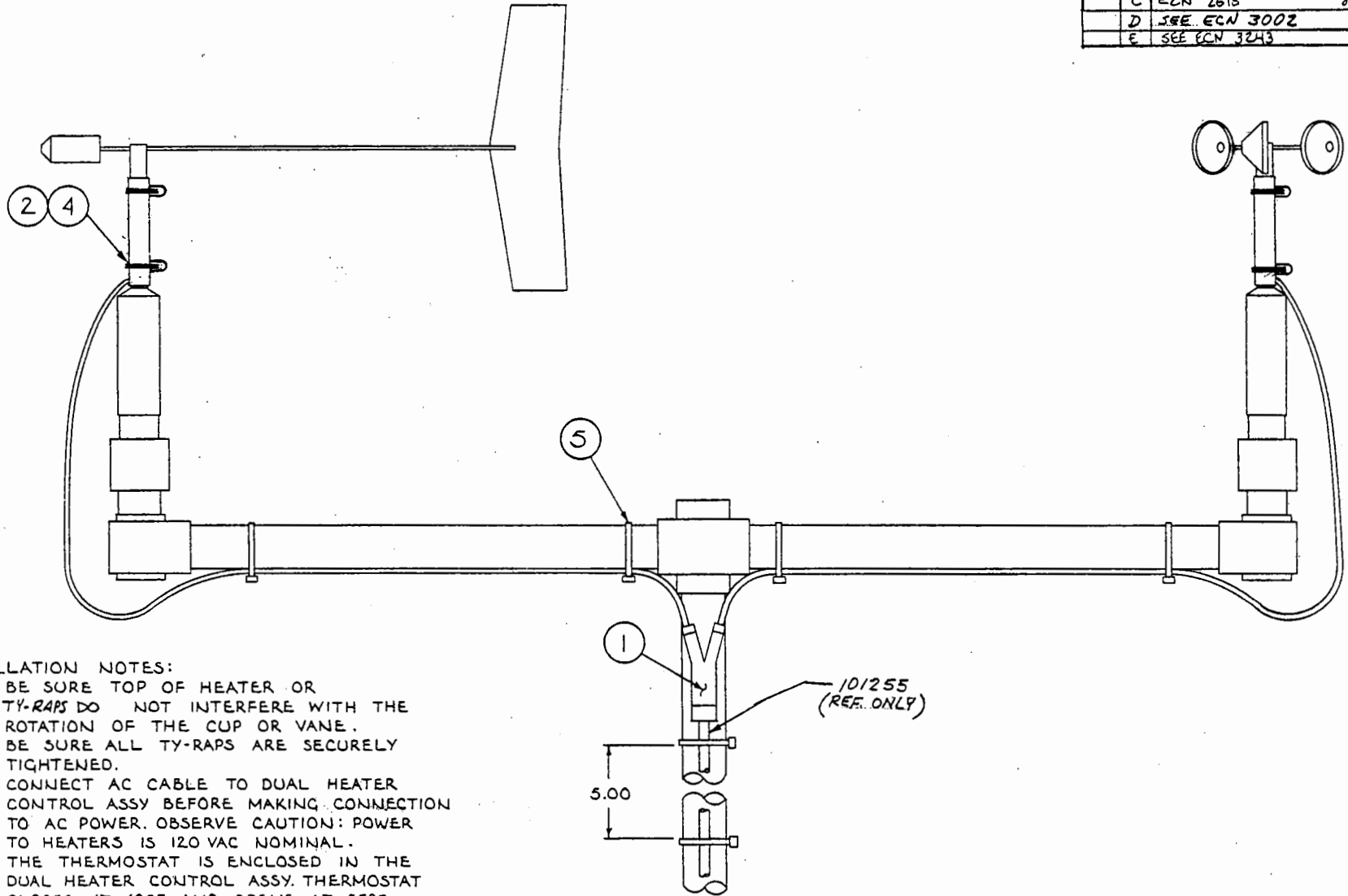
4

3

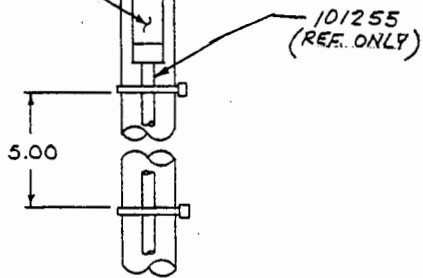
2

1

REVISIONS				
ZONE	REV.	DESCRIPTION	DATE	APPROVED
	A	ECN 1790	6/14/82	
	B	ECN 1819	7/26/82	
	C	ECN 2618	6/11/85	
	D	SEE ECN 3002	6-15-87	S.F.
	E	SEE ECN 3243	5-5-88	S.F.



- INSTALLATION NOTES:
1. BE SURE TOP OF HEATER OR TY-RAPS DO NOT INTERFERE WITH THE ROTATION OF THE CUP OR VANE.
 2. BE SURE ALL TY-RAPS ARE SECURELY TIGHTENED.
 3. CONNECT AC CABLE TO DUAL HEATER CONTROL ASSY BEFORE MAKING CONNECTION TO AC POWER. OBSERVE CAUTION: POWER TO HEATERS IS 120 VAC NOMINAL.
 4. THE THERMOSTAT IS ENCLOSED IN THE DUAL HEATER CONTROL ASSY. THERMOSTAT CLOSES AT 40°F AND OPENS AT 55°F.
 5. WHEN THE HEATERS ARE ON THE POWER DISSIPATED IS 20 WATTS. OBSERVE CAUTION WHEN HANDLING HOT HEATERS.



QTY	FRGM NO.	PART OR IDENTIFYING NO.	NOMENCLATURE OR DESCRIPTION	MATERIAL SPECIFICATION
PARTS LIST				
UNLESS OTHERWISE SPECIFIED DIMENSIONS ARE IN INCHES TOLERANCES ARE: FRACTIONS DECIMALS ANGLES XXX.XX .010 .1		CONTRACT NO.		
MATERIAL		APPROVALS	DATE	CLIMATECH
FINISH		DRAWN	4/27/82	
NEXT ARMY USED ON		CHECKED	DATE	F460 EXTERNAL HEATER
		ISSUED	5/13/82	
APPLICATION		SCALE	DWG. NO.	REV.
DO NOT SCALE DRAWINGS			C 52330	101235
				E
			SHEET	1 OF 2

4

3

2

1

F460 EXTERNAL HEATERS 10 WATT

P/N 101235 Rev E

PARTS LIST

Sheet 2 of 2

ITEM	SYM.NO	QTY	PART NO.	DESCRIPTION
1		0.0	101235G	SEE G-LIST
2		2.0	101229	F460 HEATER ASSEMBLY
4		10.0	PLT350	TIE WRAP, BLACK

SEE G-LIST
P/N 101235G Rev A
PARTS LIST
Sheet 1 of 1

ITEM	SYM. NO	QTY	PART NO.	DESCRIPTION
G0		1.0	101232-G0	120VAC DUAL HEATER CONTROL
G1		1.0	101232-G1	220VAC DUAL HEATER CONTROL

120V DUAL HEATER CONTROL
P/N 10123500 Rev
PARTS LIST
Sheet 1 of 1

ITEM	SYM.NO	QTY	PART NO.	DESCRIPTION
		1.0	101232-00	120VAC DUAL HEATER CONTROL

220V DUAL HEATER CONTROL

P/N 10123561 Rev

PARTS LIST

Sheet 1 of 1

ITEM	SYM. NO	QTY	PART NO.	DESCRIPTION
		1.0	101232-G1	220VAC DUAL HEATER CONTROL