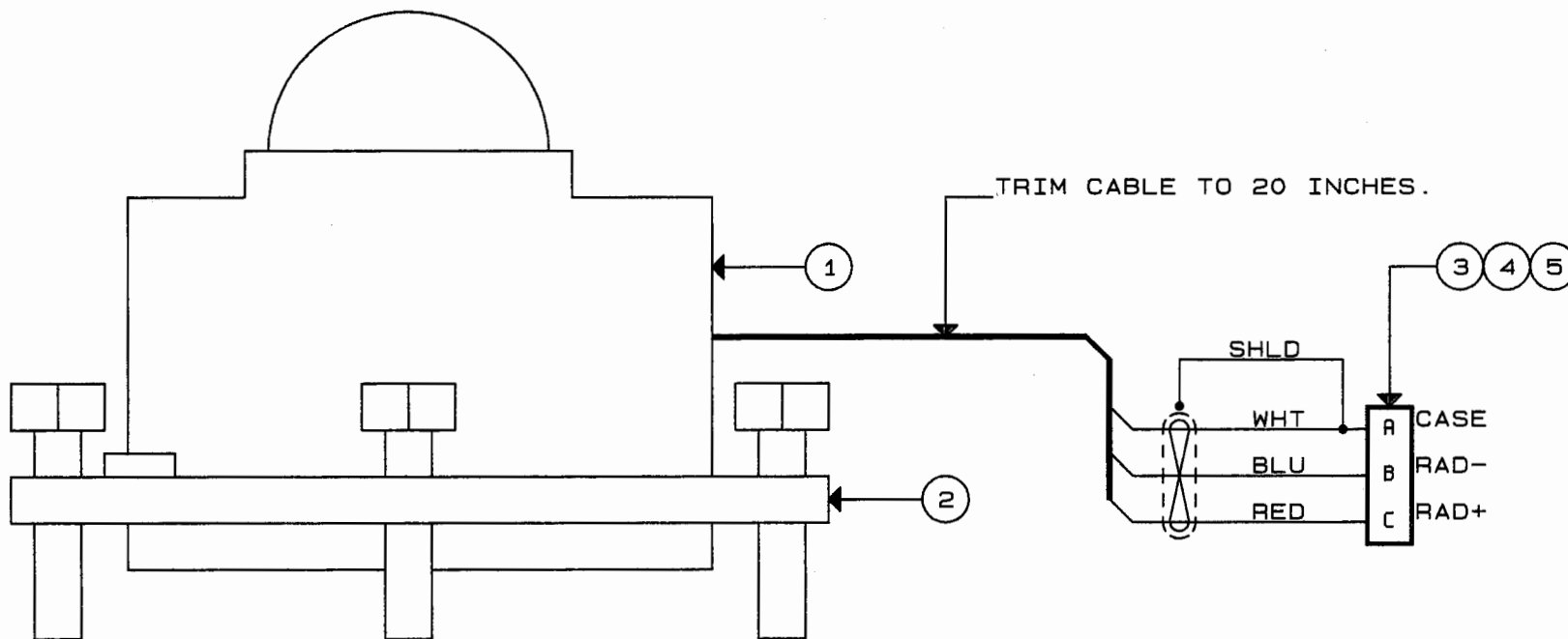



| REVISIONS | | | |
|-----------|-------------|----------|----------|
| REV. | DESCRIPTION | DATE | APPROVED |
| A | ECN 5349 | 10-18-04 | |



| | | | | | | | |
|---|---------|----------------------|-------|---|-----------|----------|--------|
| UNLESS OTHERWISE SPECIFIED DIMENSIONS ARE IN INCHES TOLERANCES ARE: FRACTIONS DECIMALS ANGLES ± .XX ± ± .XXX ± | | CONTRACT NO. | |  | | | |
| | | APPROVALS | DATE | | | | |
| MATERIAL | | DRAWN | | SENSOR ASSY., RADIATION (CM3) | | | |
| N/A | | D. ADAMS | 03/97 | | | | |
| FINISH | | CHECKED | | | | | |
| N/A | | R. NOLI | 3/97 | SIZE | CAGE CODE | DWG. NO. | REV. |
| NEXT ASSY | USED ON | ISSUED | | A | 52332 | 102318 | A |
| APPLICATION | | DO NOT SCALE DRAWING | | SCALE | | SHEET | 1 OF 2 |
| | | | | | | | |

ARESCO, HICKSVILLE, N. Y. - OGILVIE 89911

SOLAR RADIATION SENSOR (CM3)
P/N 102318 Rev A
PARTS LIST
Sheet 2 of 2

| ITEM | SYM.NO | QTY | PART NO. | DESCRIPTION |
|------|--------|-----|---------------|---------------------------|
| 1 | | 1.0 | 1305.940 | PYRANOMETER, SECOND CLASS |
| 2 | | 1.0 | 0305.820 | LEVELING FIXTURE FOR CM3 |
| 3 | | 1.0 | MS3101F14S-7P | CONNECTOR, RECEPTACLE |
| 4 | | 1.0 | MS3420-4 | #4 BOOT |
| 5 | | 1.0 | MS3420-6 | #6 BOOT |