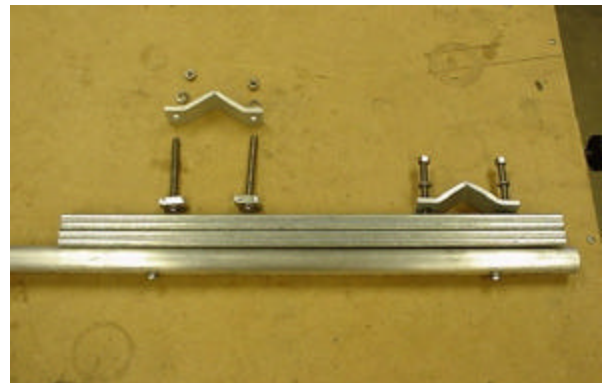
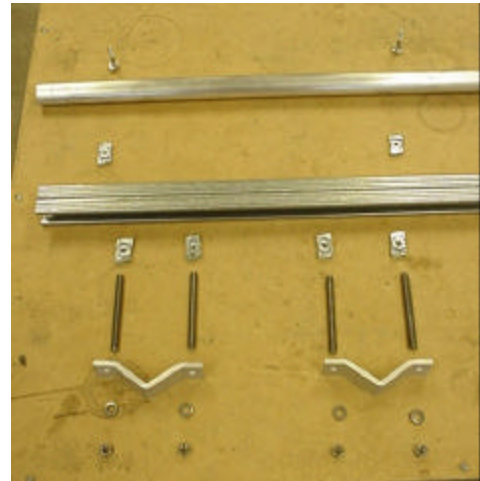


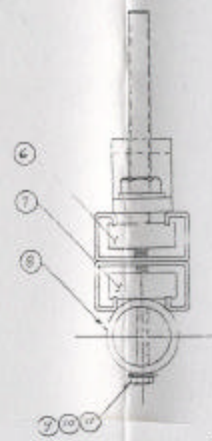
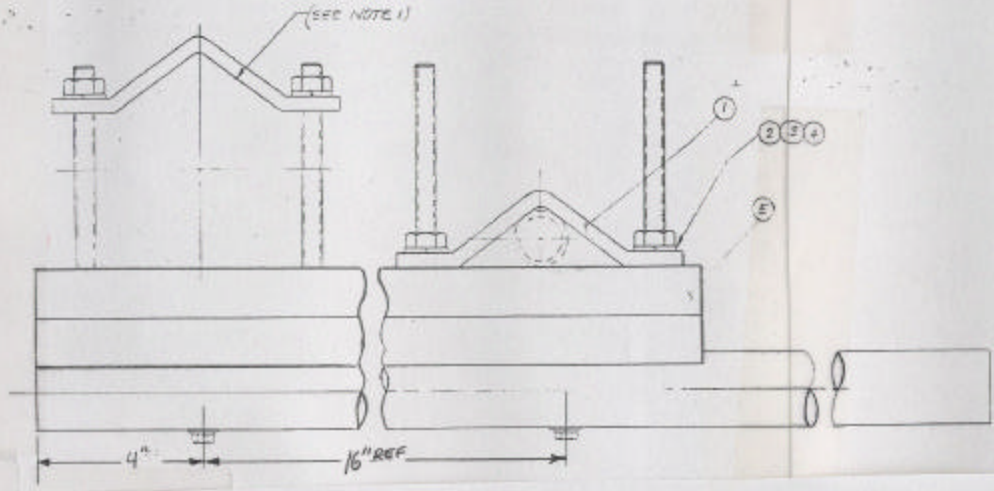
## P/N 101069 INSTRUMENT BOOM

The P/N 101069 tower boom is a fixed boom assembly. This boom assembly is designed to mount on two vertical pipes with an outside diameter of  $\frac{3}{4}$ " to 3.0" such as two of the legs of a triangular instrument tower, which are not separated by more than 18" on the center.

The tower boom is easily assembled using common hand tools.

1. Start by installing the six spring-loaded "Unistrut" nuts in to the Unistrut channel, two on one side, four on the other. Compress the spring of the nut and slide it in to the channel with the spring towards the bottom of the channel.
2. Line up the two nuts on one side of the Unistrut with the two holes drilled in the 1" boom pipe.
3. Secure the boom to the Unistrut with the two bolts, flat washers and lock washers supplied
4. Turn the assembly over and attach the four threaded rods to the four nuts on the other side of the Unistrut channel. **DO NOT** let the threaded rods bottom out in the Unistrut channel, as the spring-loaded nuts should be free to move in the channel for later adjustments.
5. Bring the boom assembly and the remaining hardware to the tower or pipe structure where the boom is to be installed. Line up the boom assembly such that a pair of the threaded rods ends up on each side of the two pipes the boom is being attached to.
6. Slip the "V" clamps on to the threaded rods and secure them loosely with the nuts and lock washers supplied. Use a carpenters level to insure that the boom is level and then tighten the nuts that secure the "V" clamps and the boom to the pipes.





NOTE:  
 1) BRACKET ADJUSTS BETWEEN  
 PIPE DIA. (3/4 IN. TO 2 1/4 IN.)

REV	DATE	DESCRIPTION	BY	CHKD

ALL DIMENSIONS UNLESS SPECIFIED ARE IN INCHES UNLESS OTHERWISE SPECIFIED FINISHES ARE AS SHOWN UNLESS OTHERWISE SPECIFIED	CONTRACT NO. ORDER NO. DATE	PARTS LIST QUANTITY PART NO.
SEE PART LIST	DRAWN BY: PROJEKTS DATE: 11-78	TOWER

**TOWER BOOM**  
**P/N 101069 Rev B PARTS LIST**  
**Sheet 2 of 2**

ITEM	SYM.NO	QTY	PART NO.	DESCRIPTION
1		2.0	500792	BRACKET, CLAMP
2		4.0	MS35338-141	WASHER LOCK SPLIT 3/8
3		4.0	MS51971-3	NUT HEX 3/8-16
4		4.0	3/8-16X4	ROD, THREADED 3/8-16 X 4 IN
SS				
5		1.0	500794-1	24 INCH UNISTRUT
6		4.0	P4008	UNISTRUT NUT 3/8-16
7		2.0	P4006-1420	UNISTRUT NUT 1/4-20
8		1.0	500958	PIPE, BOOM
9		2.0	MS15795-810	WASHER FLAT 1/4
10		2.0	MS35338-139	WASHER LOCK SPLIT 1/4
11		2.0	MS35307-312	BOLT 1/4-20 x 11/2